

Use address from Hardware Config:

Peripheral Input Double Word (PID) for position value
 Peripheral Input Word (PIW) for velocity

Peripheral Output Double Word (PQD) for preset value

Use the S7-Notations "PID", "PIW" and "PQD" to access the values!

Example:

Position value: PID 256

Velocity: PIW 260

Preset value: PQD 256

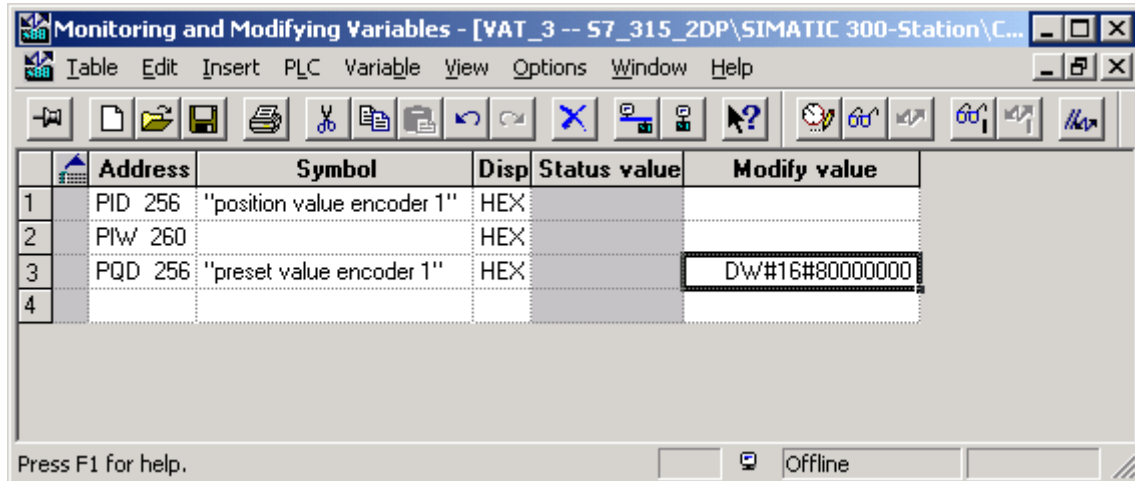
Variable table can be used to test the functionality:

Example:

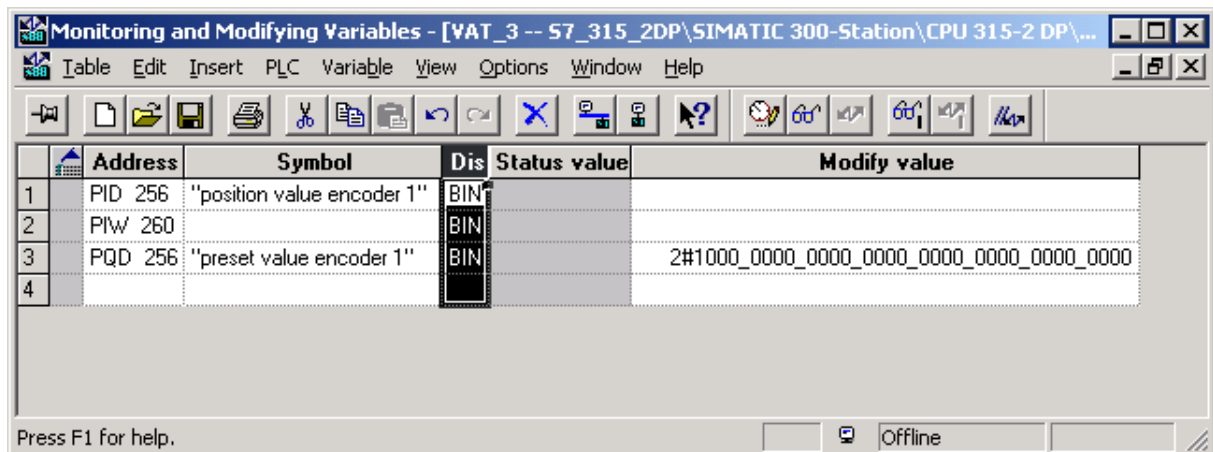
Setting the preset value "0":

Set MSB (Bit 31) of the Peripheral Output Double Word to 1:

(80 00 00 00 hex)



(Binary):



Reset the MSB (Bit 31) to 0:

